

# RECYCLED WATER USE

## *Public Health and Environmental Safety Considerations*

Sacramento Environmental Commission

August 17, 2015

## WHY USE RECYCLED WATER?

- Population growth & new water demands continue to stretch the limited water resources
- Water recycling is a reliable & sustainable alternative water supply
- Water recycling can be an effective effluent management option for wastewater



## WHAT IS THE DIFFERENCE?

### POTABLE WATER

- **Source:** Rivers, Lakes, and Wells
- **Treatment:** Extensive
- **Water Quality Testing:** Extensive
- **Distribution System Testing:** Extensive
- **Safety Data:** Extensive

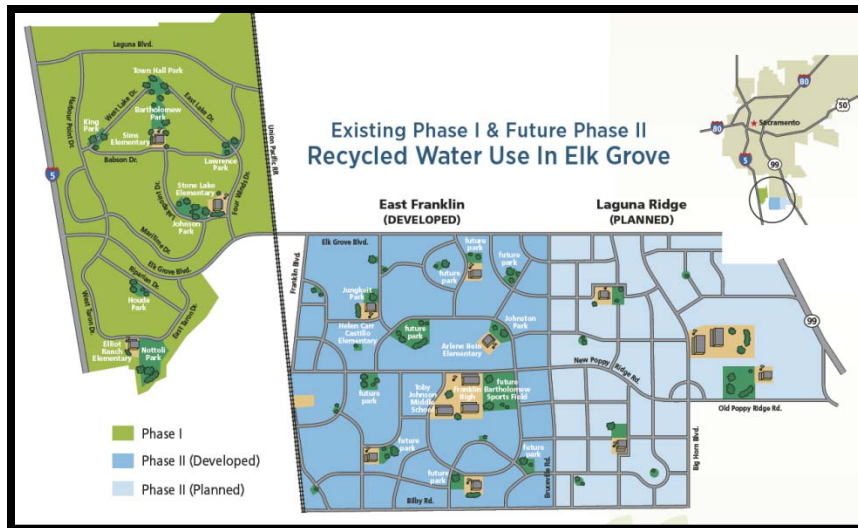
### RECYCLED WATER

- **Source:** Municipal wastewater
- **Treatment:** Adequate for specific uses
- **Water Quality Testing:** Once per day for coliform bacteria at the plant.
- **Distribution System Testing:** None required
- **Safety Data:** Minimal

# CURRENT SITES IN SACRAMENTO

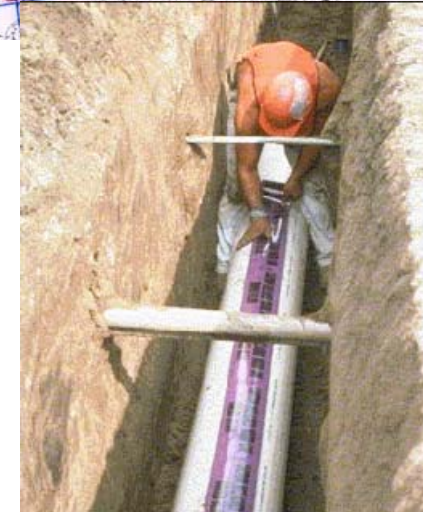
## Laguna – Elk Grove

## Rancho Murieta Community Services District



## PRELIMINARY SITE REQUIREMENTS

- **Plan check** to review proposed piping, sprinkler head and signage placement.
- **Open trench inspection** to verify drinking water and recycled water pipes are not connected.



# INITIAL SITE INSPECTION REQUIREMENTS

- **Piping system shut down test** to verify that potable water and recycled water pipes are not cross-connected
- Verify **backflow protection assemblies** are installed
- **Sprinkler coverage test** to verify recycled water drift control



# ANNUAL AND 4-YEAR INSPECTION REQUIREMENTS

- **Annual Inspection**
  - Sprinkler test
  - Signage
  - Staff training
  - Confirm backflow testing
- **4-Year Inspection**
  - Same as initial inspection



## CONCERNS

- Recycled water and potable water **lines connected**
- Irrigation system **not color coded and properly identified**
- Sprinkler systems not maintained – **overspray and vector control issue**

### Chula Vista center connected to pipes carrying treated sewage

By Anne Krueger

UNION-TRIBUNE STAFF WRITER

August 22, 2007

Shop owners in a Chula Vista business park knew something was wrong with their water. It tasted bad, smelled funny and had a yellowish tint.

"You would flush the toilet, and it looked like it wasn't flushed," said Amy Wise, co-owner of the Candy Bouquet, which sends out candy arrangements.

The Otay Water District assured the merchants that the water was fine, but the merchants weren't convinced. The park's property manager sent a water sample to a private lab and got some shocking news Friday.



HOWARD LIPIN / Union-Tribune



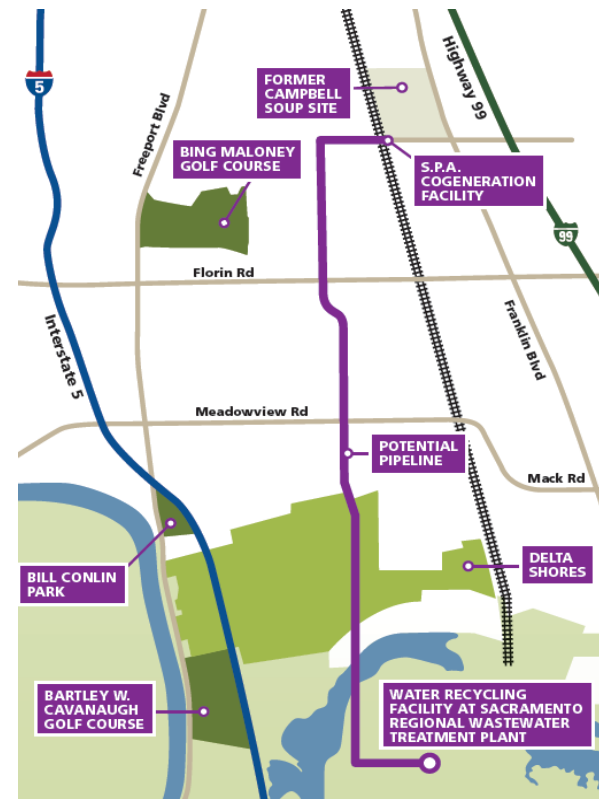


# FUTURE SITES IN SACRAMENTO

## South County Ag Project



## Sacramento Cogeneration Facility



## FOOD FOR THOUGHT

- Recycled water and potable water **are not the same**
- Okay for use as long as **treatment, use site requirements, and ongoing maintenance** are managed
- Education and outreach very important!

## QUESTIONS?

Chris Hunley  
Sacramento County EMD  
(916) 876-7277  
hunleyc@saccounty.net