



ENVIRONMENTAL COMPLIANCE DIVISION

ENVIRONMENTAL
MANAGEMENT
DEPARTMENT

Award-Winning Programs

16+
AWARDS
SINCE
2008



Award-Winning Programs con't



Environmental Compliance Division



Marie Woodin, Chief of Environmental Compliance

Hazardous Materials Business Plans and Storage

Hazardous Waste Storage and Generation

Aboveground Petroleum Storage

Underground Storage Tanks

Accidental Release Prevention Program

Medical Waste

Solid Waste Facilities

Abandoned Wells Program

Wells

Land Use

Cross Connection Control Program/ Backflow Prevention

SWA Recycling

Liquid Waste/Septic Systems

Small Drinking Water Systems

Toxic Site Clean Up

Recycled Water

Environmental Compliance Division



Certified Unified Program Agency (CUPA)



Hazardous Material Business Plan

- Update City of Palo Alto CERS website
- Perform an inspection of MSC building C
- Inventory for hazardous material and hazardous waste stored in each shop
- Modify changes on the map for new location of storage
- Opportunity to meet new people in the MSC Building C

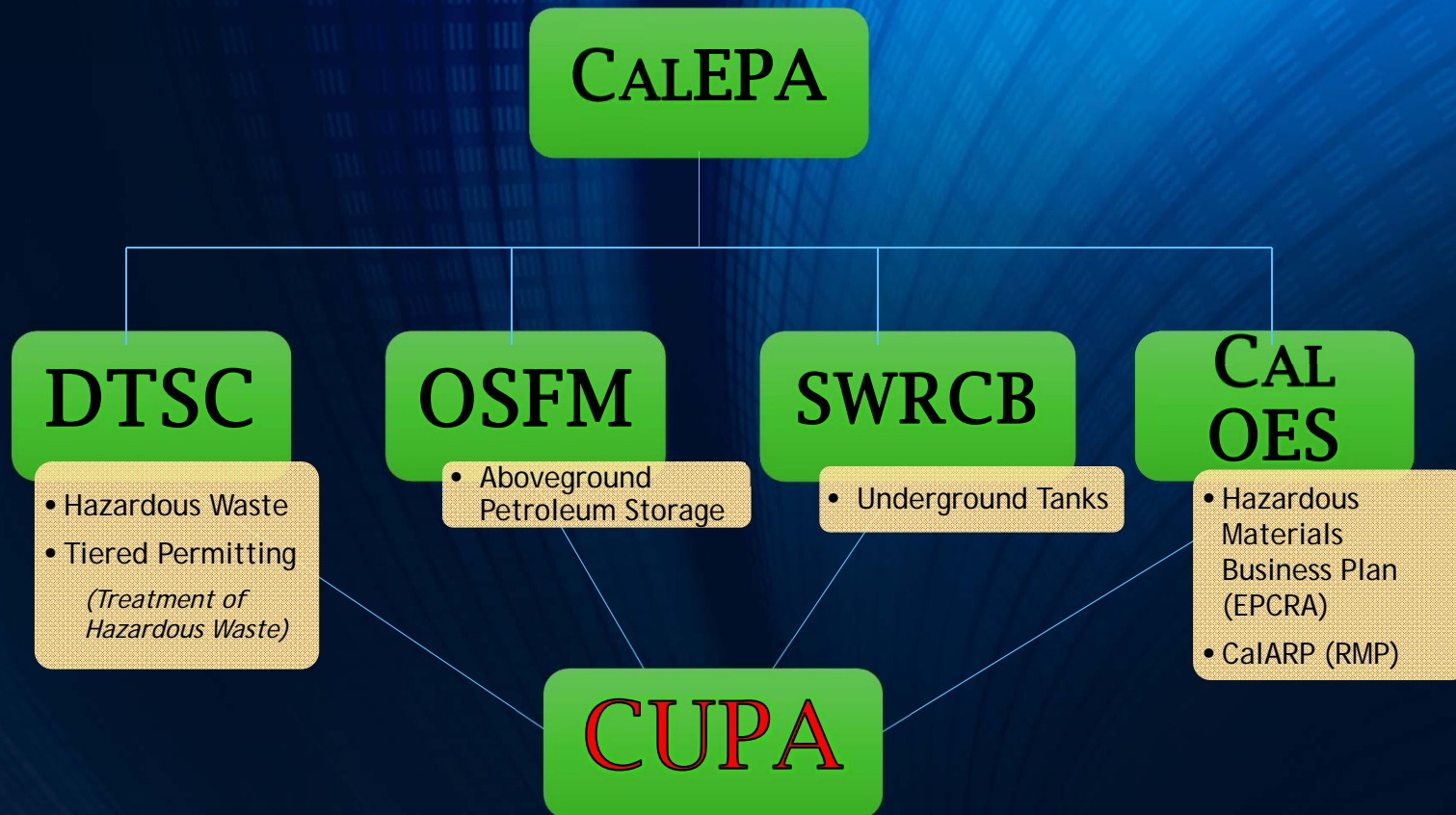


What is a Certified Unified Program Agency (CUPA)?

The Unified Program (created in 1993 – SB 1082, Calderon) consolidates, coordinates, and makes consistent the administrative requirements, permits, inspections, and enforcement activities of six environmental and emergency response programs in California:

- 1) Hazardous Materials Release Response Plans and Inventories
- 2) California Uniform Fire Code: Hazardous Material Management Plans and Hazardous Material Inventory Statements
- 3) California Accidental Release Prevention (CalARP) Program
- 4) Underground Storage Tank (UST) Program
- 5) Aboveground Petroleum Storage Act (APSA)
- 6) Hazardous Waste Generator and Onsite Hazardous Waste Treatment (Tiered Permitting) Programs

CUPA PROGRAMS & REGULATORY STRUCTURE



Hazardous Materials Incident Response Team

- Ensures coordinated Area Plan for Emergency Response the Hazardous Materials Incidents (Spill/Releases).
- Provides 24-hour incident response consultation and assistance through six staff that rotate on-call assignments in the program.
- Safeguards public health through an on-site assessment of potential threats to people or the environment at scenes involving hazardous materials.
- Ensures that proper disposal of hazardous materials occurs at incidents and oversees any necessary ongoing site clean-up.
- Integral participant in disaster planning and response training and exercises for the Sacramento region.





Medical Waste



- Organisms and sharps (needles, etc.). Protect public health and the environment from potential infectious exposure to disease causing agents.
- Regulates handling, storage, treatment, and disposal of biohazardous waste.
- Ensures health and safety protection for members of the public and healthcare facility personnel by minimizing or eliminating exposure to biohazardous wastes containing pathogenic organisms and sharps.



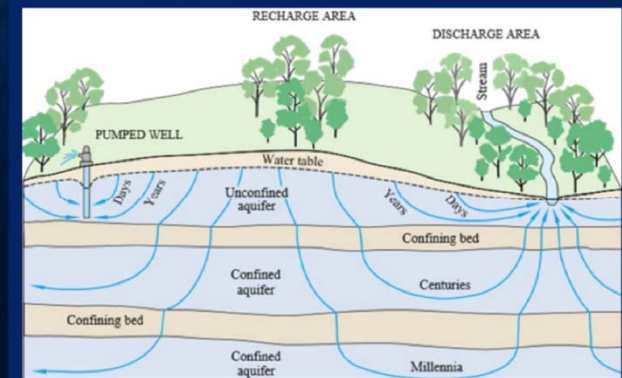
Solid Waste Facilities

- As Local Enforcement Agency (LEA), EMD permits and inspects solid waste facilities to ensure compliance with state minimum standards:
 - Active and Closed Landfills
 - Transfer Stations
 - Composting & Anaerobic Digester Facilities
 - Wood & Green Waste Chip & Grinding Operations
 - Construction, Demolition and Inert Debris Processing Facilities
- Inspects refuse collection vehicles
- Responds to complaints about illegal dumping and public nuisances caused by solid waste facilities.



Well Program

- Well construction and demolition standards
- Protect groundwater from potential contamination from surface and other sources
- Water Supply Wells, Monitoring Wells, Exploratory Soil Borings, Geothermal Heat Exchange Wells, and Cathodic Protection Wells.



Abandoned Wells

Groundwater Impacts

Sacramento County relies on groundwater to supply half of its water needs. Water runoff which flows into abandoned wells can carry bacteria, sediment, fertilizer, pesticides and other pollutants directly into our groundwater. Residents may not know their drinking water is unsafe because many contaminants are not visible from looking at the water.

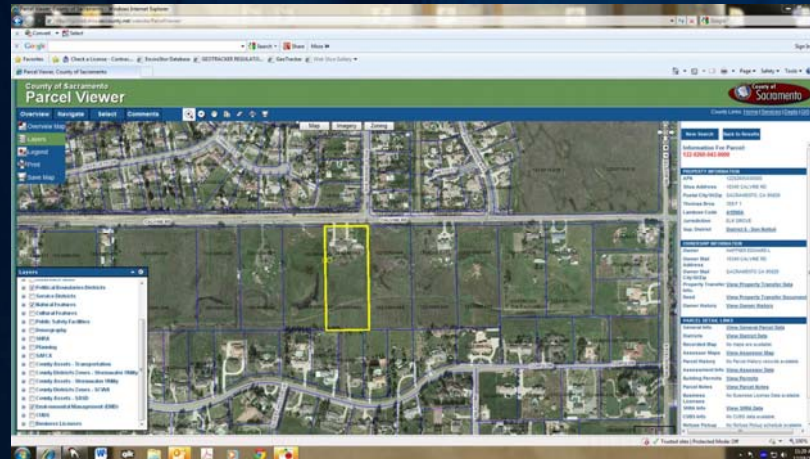
Safety Hazard

There are abandoned wells as small as 8 inches wide that children and animals can fall into causing injury or death. Open pit wells and large-diameter drilled wells are particularly hazardous and often are hundreds of feet deep.



Land Use

- Performed in conjunction with county and city planning departments.
- Review of proposed development projects such as Conditional Use Permits, CEQA documents, or new subdivisions.
- Apply conditions for the project to protect the public's health and environment.
- Create parcel and facility level land use holds (in vicinity of known toxic sites, etc.)



Cross Connection Control Program/ Backflow Prevention

- Protect the public health by preventing the flow of any unwanted material back into Public Drinking Water systems.
- Enforce annual requirement for testing of backflow prevention devices.
- Maintain list of certified testers registered to perform annual testing of backflow prevention devices.
- Conduct cross connection site surveys in collaboration with water agencies





SWA Recycling



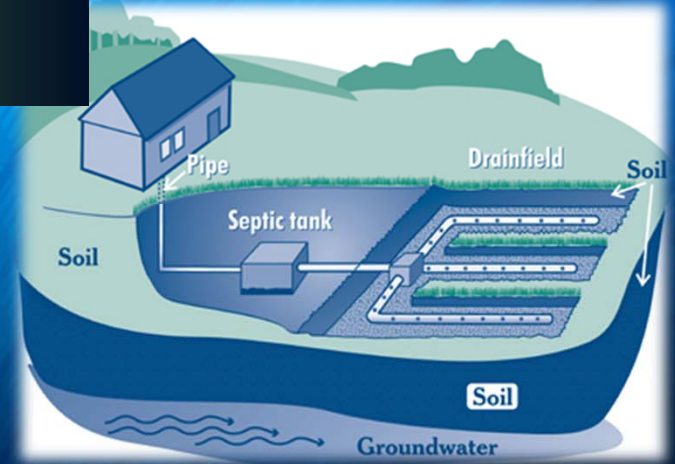
Perform outreach and inspection for the Sacramento Regional Solid Waste Authority (SWA)

- Business Recycling
- Multi-Family Recycling
- Organics (New)



Liquid Waste/Septic Systems

- Local Area Management Plan (LAMP)
- Design, construction, and installation of on-site wastewater treatment systems and wastewater holding tanks.
- Businesses and vehicles engaged in the cleaning of septic tanks, portable toilets, and wastewater holding tanks.
- On-site wastewater processing and or treatment facilities



Small Drinking Water Systems

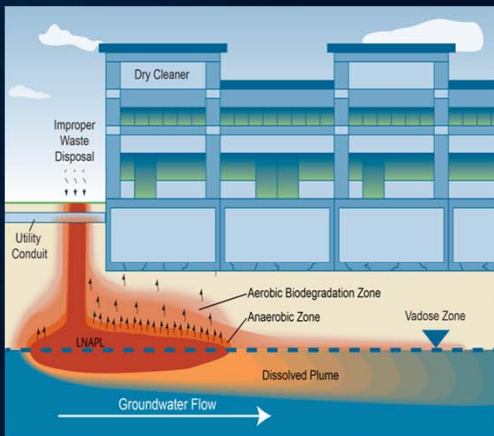
- Local Primacy Agency, under agreement with the State Water Resources Control Board
- Permitting, inspection, and monitoring of approximately 150 small water systems.
- Ensure that small water systems deliver safe, adequate, and dependable potable water.
- Boil Water or Do-Not-Drink notices / coordination with Public Health Officer



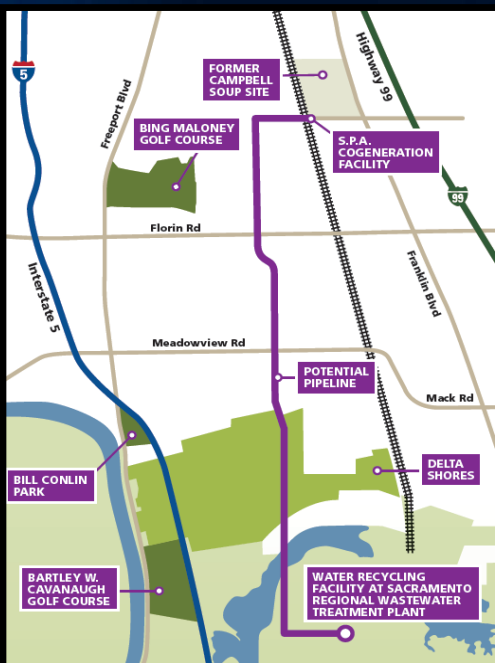
Site Assessment & Mitigation (Toxic Site Cleanup)



- Regulatory oversight of the assessment and remediation of soil and/or groundwater contamination.
- Determine when and to what degree site cleanup is required to mitigate threats to public health and the environment.
- As Local Oversight Program (LOP), EMD is responsible for overseeing corrective action and enforcement activities associated with unauthorized releases of petroleum products from underground storage tanks.
- As Local Remediation Program (LRP), EMD provides technical regulatory oversight for corrective actions at hazardous materials release sites involving non-petroleum products (for example, dry cleaners, metal plating shops.)
- Also voluntary site cleanup program where the responsible party (RP) has requested EMD oversight.
- Work closely with other State Agencies on the scope necessary for assessment, monitoring, and cleanup to reach a finding of no further action needed.



Recycled Water



- Plan check to review proposed piping, sprinkler head and signage placement.
- Open trench inspection to verify drinking water and recycled water pipes are not connected.
- Piping system shut down test to verify that potable water and recycled water pipes are not cross-connected
- Verify backflow protection assemblies are installed
- Sprinkler coverage test to verify recycled water drift control
- Annual and 4-year inspection requirements

Environmental Compliance Division

ENFORCEMENT

CUPA-Haz Waste and Storage

LOCAL ENFORCEMENT AGENCY
WELLS

Fees Collected
through County
Clerk's Judgment

Judgment to
collect penalty is
through a Court
Order

Award Winning Online Training Videos: Underground Storage Tanks Inspections

